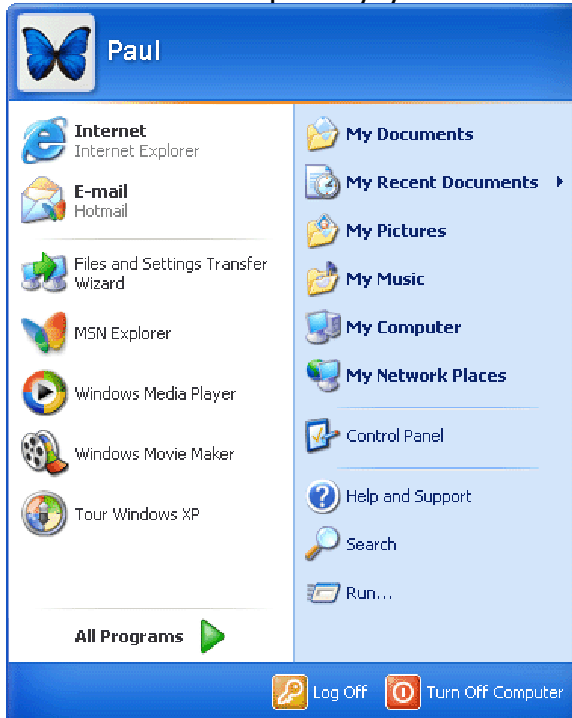


Installing an Ethernet internet connection on your own machine – Windows XP

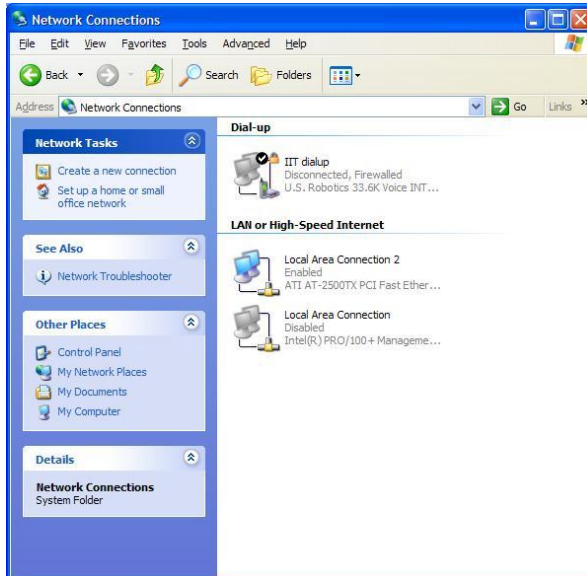
Note: This only applies to computers running Windows XP; if you run Windows 98 or Windows 2000, grab a copy of the guide outside the computer office! Also note that I haven't got a computer running Windows XP, so I'm doing this from memory – please point out any mistakes you find!

1. Click "Start". Hopefully you should get something like this:

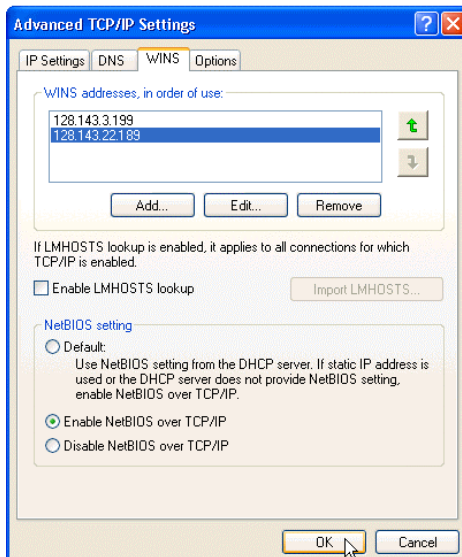


2. Right click on "My Network Places" and click "Properties". Alternatively, (I think) go to Control Panel and then "Network and Dialup Connections". Both of these methods SHOULD get you to the same place.
3. You will have several connections listed, hopefully including one or more in "LAN or High Speed connections", and probably called

“Local area connection”.



4. Ignore any connections listed as “Broadband” or “Dialup”.
5. Right click on “local area connection” and click Properties.
6. Double click on “TCP/IP protocol”, and in the box that says “IP address”, enter your IP number as provided by the computer office. Enter 255.255.0.0 as the subnet mask. Add “xxx.xxx.xxx.62” as the gateway, where the first three parts are the same as the first three parts of your IP number.
7. In the “DNS servers” boxes, type the primary and secondary DNS servers listed on your information from the computer office.
8. Click “Advanced”
9. Click on the “WINS” tab:



10. Click “Add”, then type the WINS server address listed. Repeat for the other server.
11. Click OK to all those boxes you now have open!